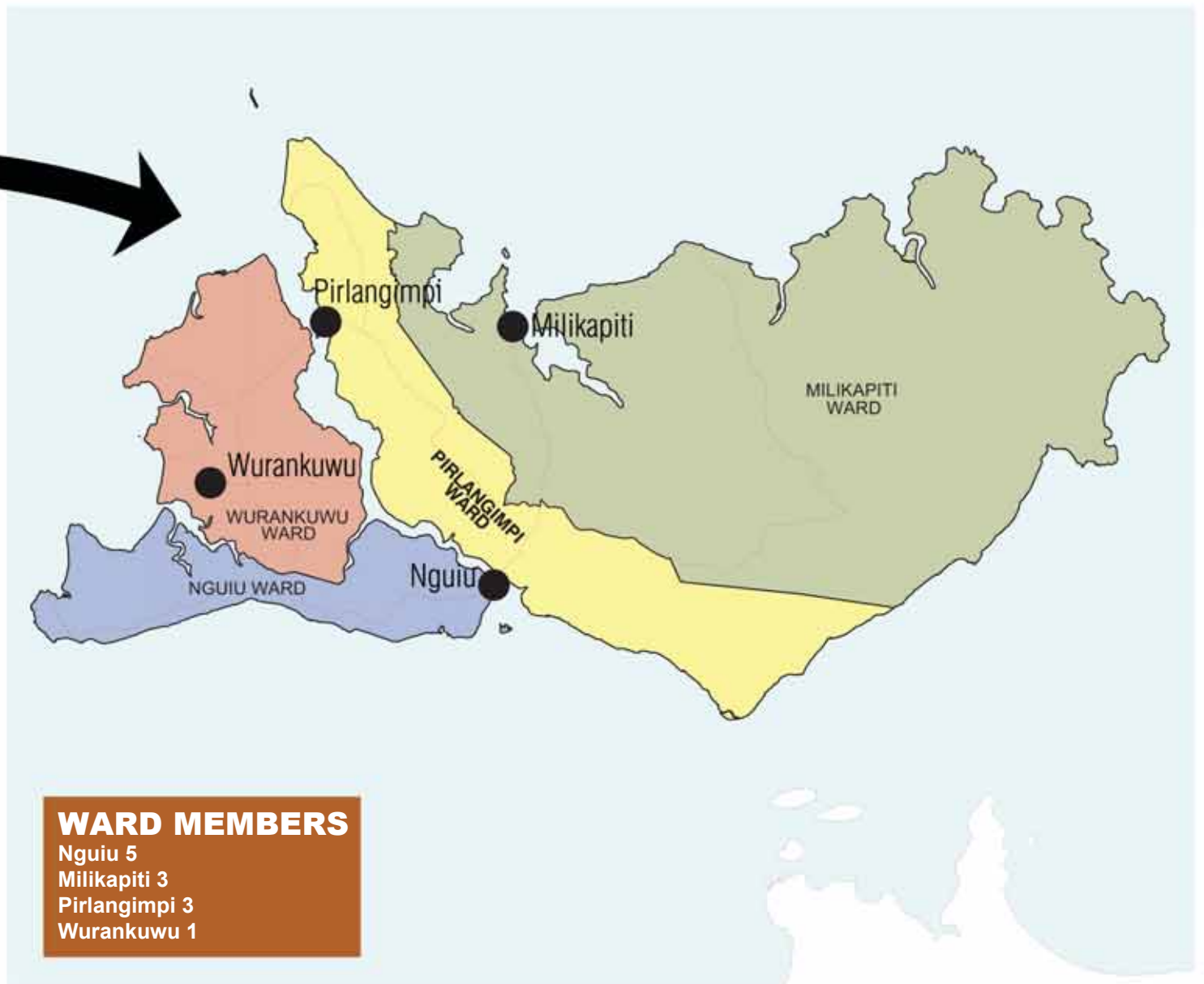
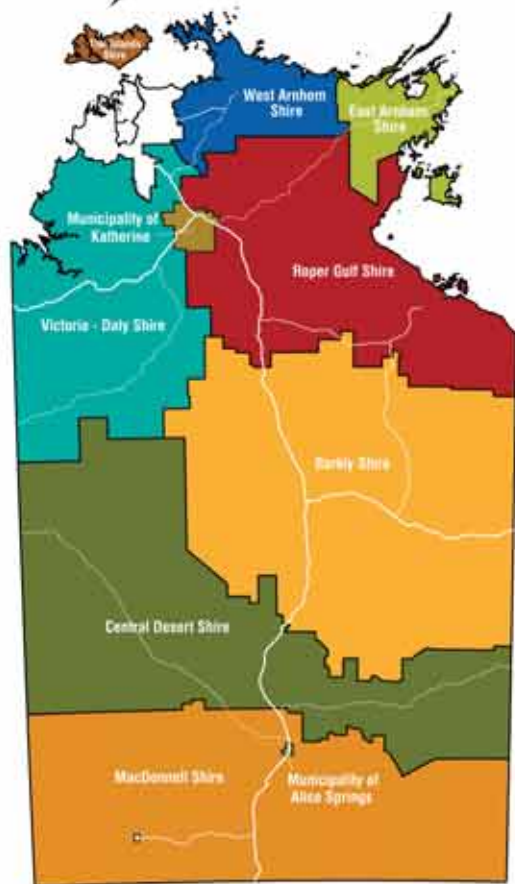


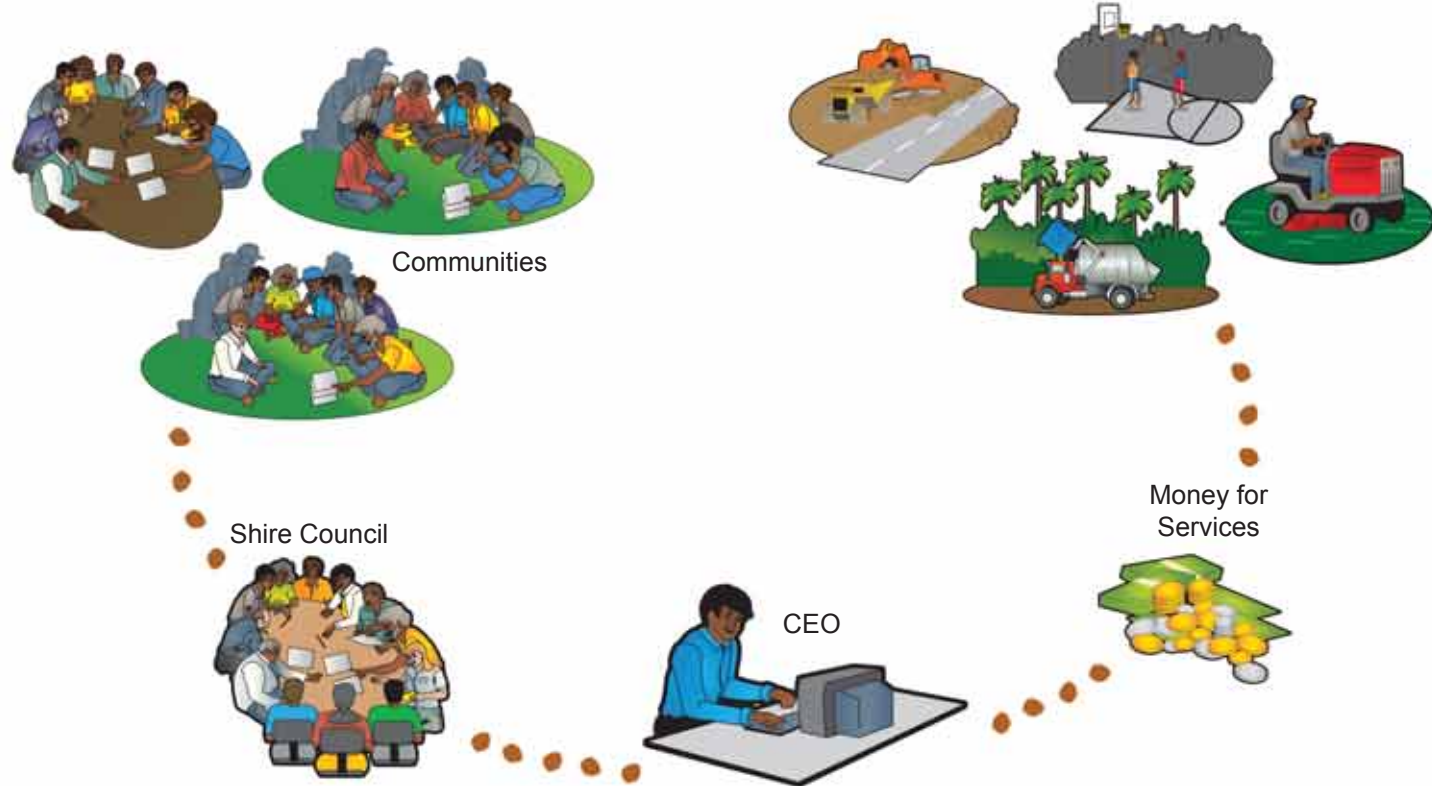
TIWI ISLANDS Shire



WARD MEMBERS

- Nguiu 5
- Milikapiti 3
- Pirlangimpi 3
- Wurankuwu 1

HOW LOCAL GOVERNMENT WORKS



WHAT WILL THE SHIRE DO?

The Shire will look after:

- Roads
- Rubbish
- Gardens, ovals, parks
- Cemeteries
- Libraries
- Dogs
- Community buildings
- Festivals and events
- Help manage emergencies
- Speak up for communities and the region
- Provide jobs for local people

The Shire will work with other agencies to provide services such as:

- CDEP
- Sport and Recreation
- Child Care
- Aged Care
- Power, Water and Sewerage
- Centrelink
- Repairs and Maintenance to Housing
- Community Patrol

SHIRE COUNCIL ELECTIONS

Elections for new Shires will be held in October. You will have the chance to vote for new Shire Councillors, who will be elected by popular vote. Or become a Shire Councillor yourself. For further information contact your Shire Council office on **8970 9500**.

If you want to learn more about changes to Local Government, phone the Hotline on **1300 654 368**. Website address: www.nt.gov.au/localgovernment/new